

4

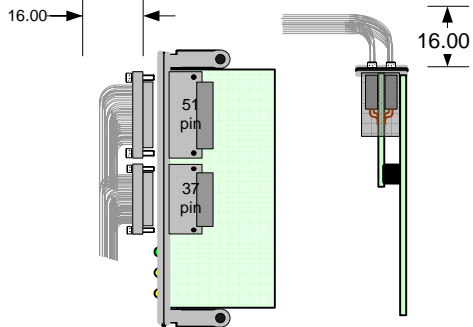
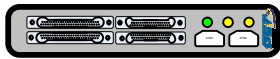
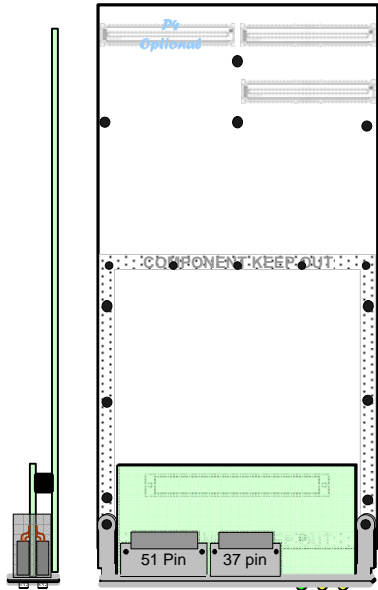
3

2

1

10075501-S-251-C

No Transition Module
w/MIL-DTL-32139



Cable Exit Parallel to Card Cable Exit Perpendicular to Card

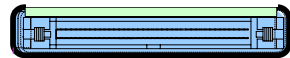
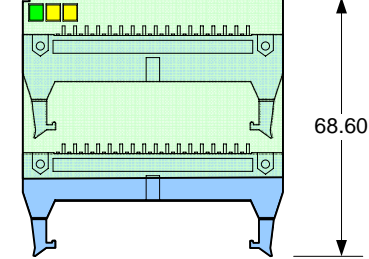
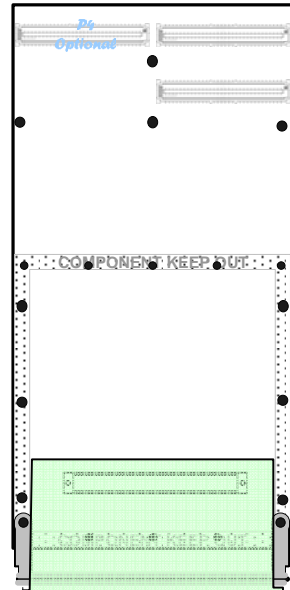
Note:

51 pin connector contains 16 bit data and Handshake signals
37 Pin connector contains upper 16 bit data

Proprietary and Confidential

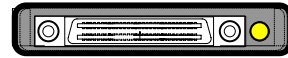
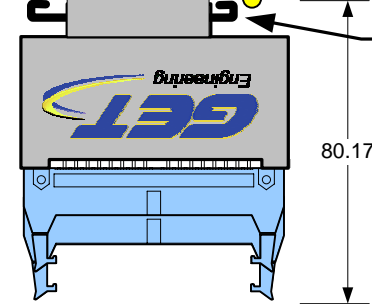
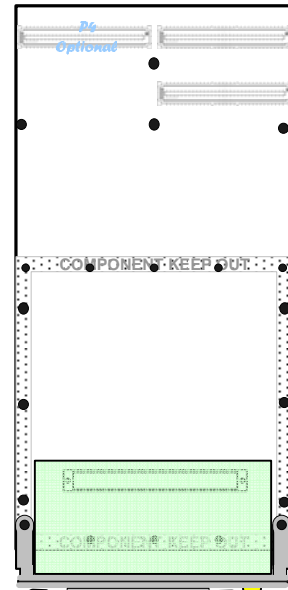
10075501-S-250-C

Dual 80 pin
Ribbon Cables



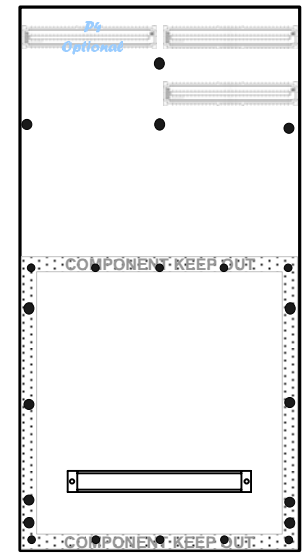
10075501-S-252-C

Legacy 10070501
120 pin Molex



10075501

Rear Panel (P4)
16 Bit Only



D

C

B

A

D

C

B

A



9350 Bond Avenue
El Cajon, CA 92021
(619) 443-8295

GET Engineering Corporation

10075501 NTDS Parallel PMC Card
Interconnect Options

Date: September 28, 2006

| | | | |
|------|------------------|--------|-----------|
| SIZE | FSCM NO 6V412 | DWG NO | REV X2 |
|------|------------------|--------|-----------|

| | | |
|------------|-------|--------|
| Scale: 1:2 | SHEET | 1 OF 1 |
|------------|-------|--------|

All Dimensions in Millimeters

4

3

2

1